

Artificial Intelligence for Humanities & Social Sciences



Με τη χρηματοδότηση
της Ευρωπαϊκής Ένωσης



ΠΑΝΕΠΙΣΤΗΜΙΟ ΚΡΗΤΗΣ
UNIVERSITY OF CRETE

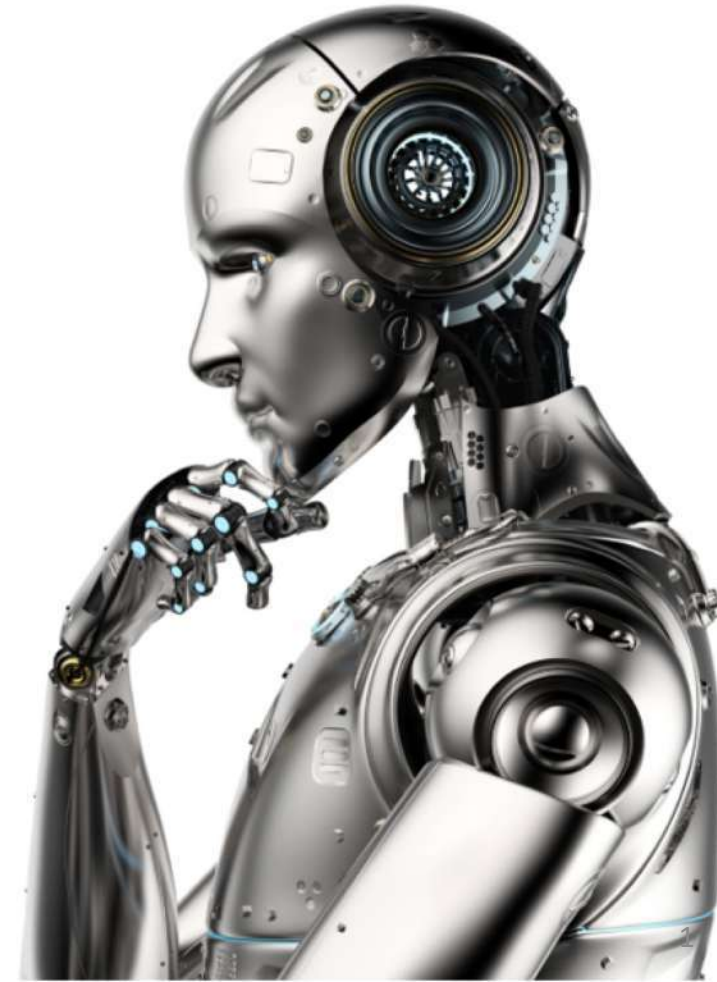
TALOS Launching event
University of Crete - Rethymno
March, 14 - 2023

“The question of whether computers can think is just like the question of whether submarines can swim.”

—EDSGER W. DIJKSTRA

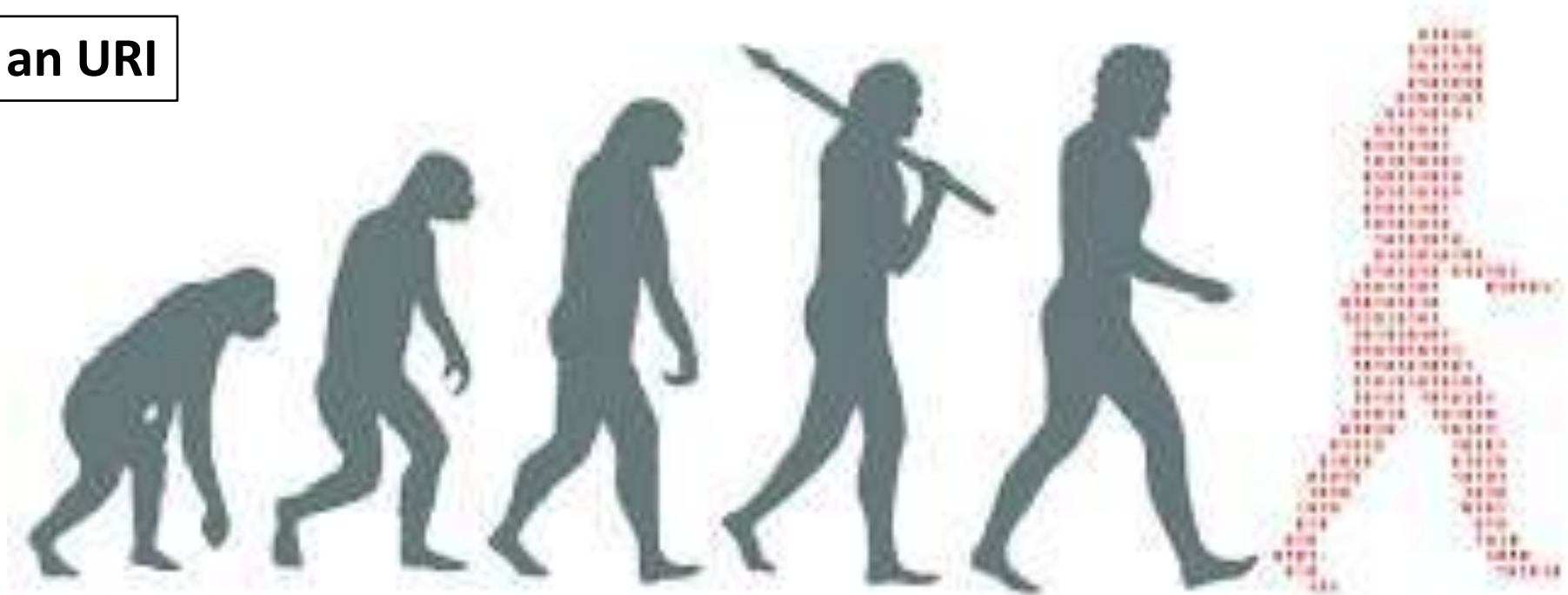
- 1) Homo Digitalis
- 2) Artificial Intelligence
- 3) Applications
- 4) AI for SSH

Prof Christophe Roche
University of Crete (Greece) - ERA Chair Holder
University Savoie Mont Blanc (France)
<http://christophe-roche.fr/>



1) Homo Digitalis

To be is to be an URI



Set of digits: digital identity
social networks
bank transactions, surfing on the web...

1) Homo Digitalis



Big Data Network

- ✓ Organize
- ✓ Classify
- ✓ Exploit



Digital Intelligence

2) Artificial Intelligence

Is a chess computer intelligent?

It is able to:

- Represent (the world)
- Reason (on the representation of the world)
- Act (on the representation of the world)
- Learn (on the representation of the world)



Is ChatGPT intelligent?

As an artificial intelligence language model, I am designed to process and analyze large amounts of data, understand natural language, and generate text that mimics human-like responses.

...it is important to note that I am still a machine and do not have consciousness or emotions like humans.

2) Artificial Intelligence

What is human intelligence?

“The ability to acquire and apply knowledge and skills” Oxford Dictionary

“the ability to learn or understand or to deal with new or trying situations” Merriam-Webster

“the ability to learn, understand, and make judgments or have opinions that are based on reason” Cambridge



ChatGPT

Human intelligence is a complex and multifaceted concept that refers to the cognitive abilities and mental capacity of human beings.

It involves the ability to reason, think abstractly, solve problems, learn from experience, understand complex ideas, communicate effectively, and adapt to new situations.



Rodin Thinker
Paris (France)

2) Artificial Intelligence

Artificial Intelligence is back in fashion. It has become efficient thanks to the **technical progress** made in **computing power** and **storage capacity**, and on the availability of a **large amount of data**.

“**Artificial Intelligence (AI)** is the part of **computer science** concerned with designing intelligence computer systems, that is, systems that exhibit the **characteristics we associate with intelligence in human behavior** – understanding language, learning, reasoning, solving problems, and so on” *"The Handbook of AI "*

Strong AI

Computer is a model of brain.
AI system can think as human does

Weak AI

AI System whose behaviour can be said intelligent



ChatGPT

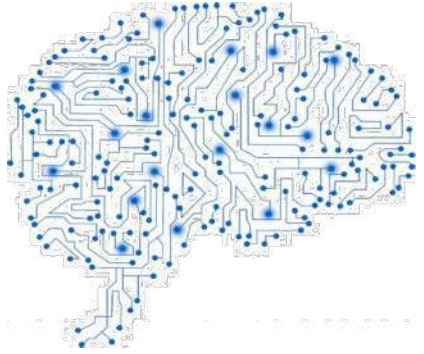
Artificial Intelligence (AI) is the **simulation** of human intelligence processes by computer systems.

These processes include **learning, reasoning, problem-solving, perception, and decision-making**.

AI technologies enable machines to perform tasks that normally require human-like cognition, such as understanding natural language, recognizing objects, making decisions, and adapting to new situations.



Connectionist A.I.



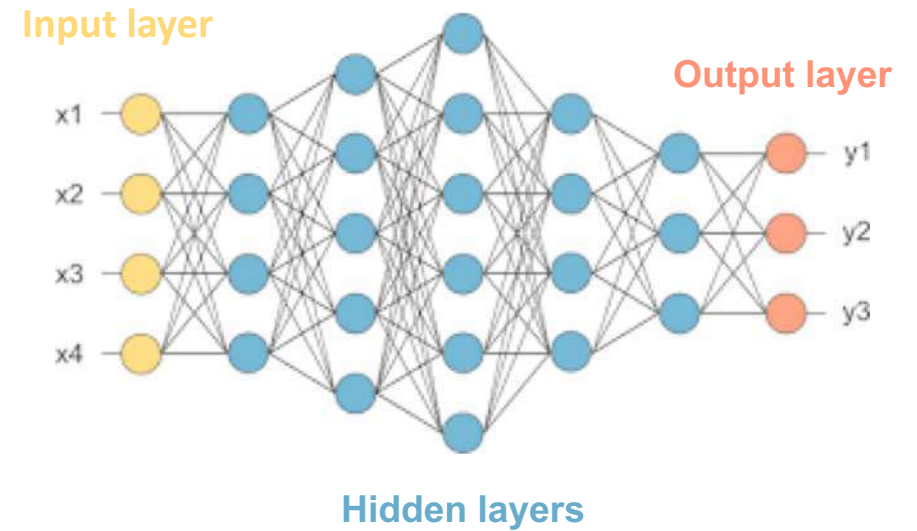
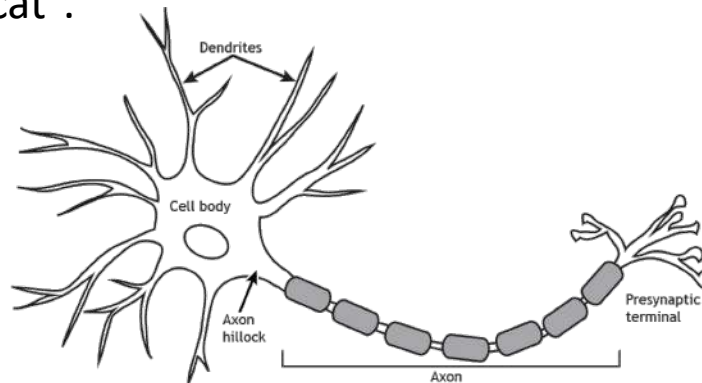
Connectionist A.I. is the branch of artificial intelligence which aims to understand how the human brain works at the neural level and, in particular, how people learn and remember.

AI is nowadays most often associated with Deep Learning based on neural networks.

Deep Learning - Neural Network

Artificial Neural Networks are computing systems inspired by biological neural networks.

Such systems "**learn**" to perform tasks by considering **examples**. For example, in image recognition, they might learn to identify images that contain cats by analyzing example images that have been **manually labeled** as "cat".



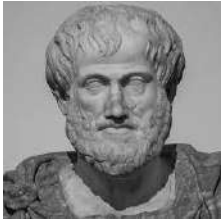
**Finding correlations
between inputs and outputs**

Symbolic A.I.

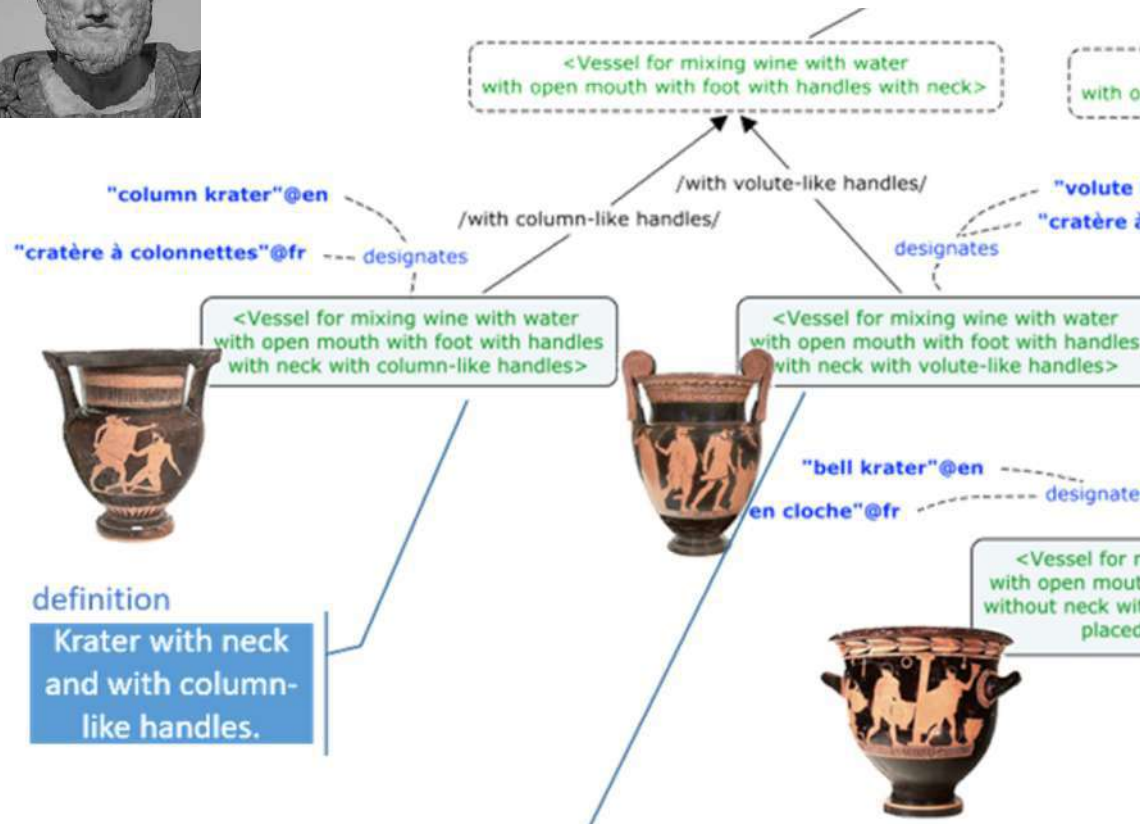


Symbolic AI (or Classical AI) is the branch of artificial intelligence which aims to explicitly **represent human knowledge** (e.g. facts and rules) in a **declarative form** (i.e. understandable both by human and computer)

Aristotle



Ontology - Terminology



Expert Systems (reasoning)

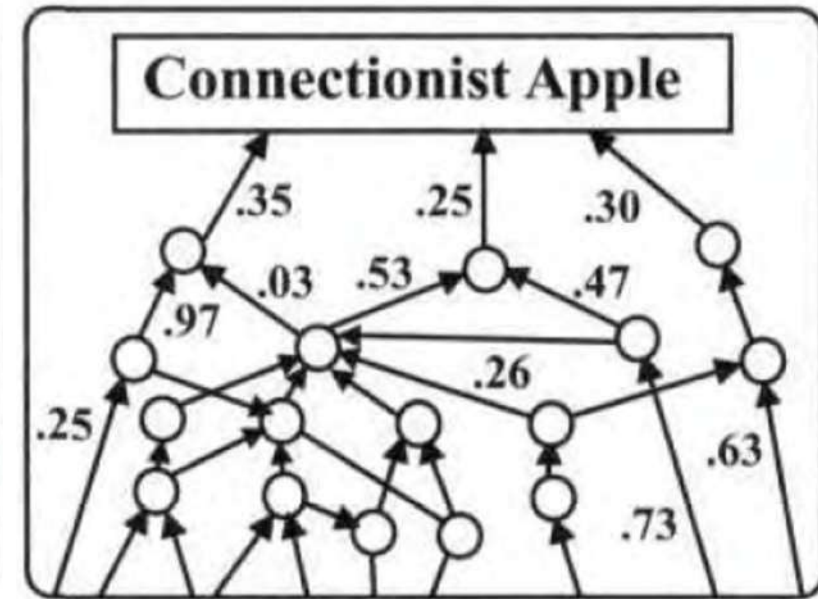
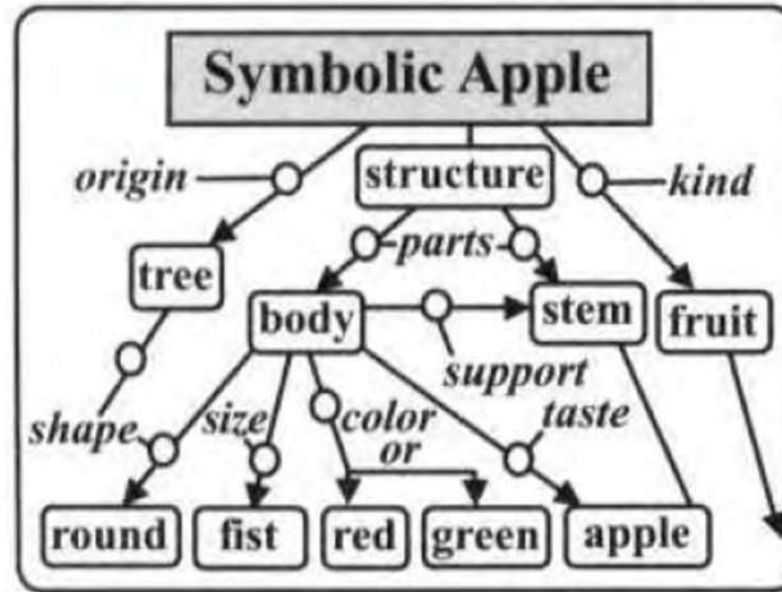


If the soil pH *is less than* 6.0
and the soil *has a high level of* aluminum,
then it is not suitable for growing most crops.

If the stock price of a company *has been rising* for three consecutive quarters
then it is likely to be a *good investment*.



Symbolic A.I. versus Connectionist A.I.



The diagram on the left shows a Semantic Network that describes various features and relationships between various aspects or parts of an apple. The diagram on the right shows an example of what is called a “*Connectionist Network*,” which also displays some aspects of an apple, but does not have any simple way to distinguish between different relationships; it only shows numbers that represent how closely those features are “associated.” It would take too long here to explain how such networks

THE EMOTION MACHINE

Commonsense Thinking,
Artificial Intelligence, and the
Future of the Human Mind

MARVIN MINSKY



Simon & Schuster
New York London Toronto Sydney

Symbolic A.I. *versus* Connectionist A.I.



<https://www.cyc.com/>

Machine learning is one powerful form of Artificial Intelligence.

Popular consumer applications such as Google Maps, Facebook's news feed, and Tesla's autopilot have been very successful at harnessing the power of machine learning to **recognize patterns in massive amounts of data.**

But **human intelligence is much more than just pattern recognition**, and **Artificial Intelligence is much more than just Machine Learning.** To earn the trust of decision makers, ML needs to **operate transparently**, to **explain** its conclusions.

**As useful as ML can be, it identifies correlation, not causation;
it requires a large volume of training data; and it can't explain its results.**



**AI
Black Box**



Hybrid A.I. : Combining Symbolic AI and ML/DL

Brings together the best aspects of neural networks and symbolic AI.

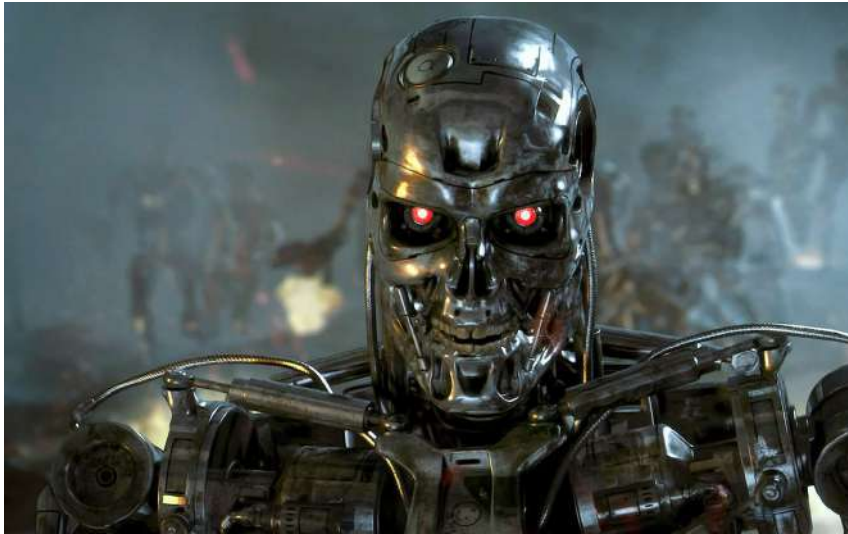
3) Applications



AI is everywhere



Should we be afraid of A.I.?



Military robots are autonomous robots or remote-controlled mobile robots designed for military applications, from transport to search & rescue and attack.

Autonomous weapons select and engage targets without human intervention.

Autonomous weapons have been described as the third revolution in warfare, after gunpowder and nuclear arms.



Facial recognition



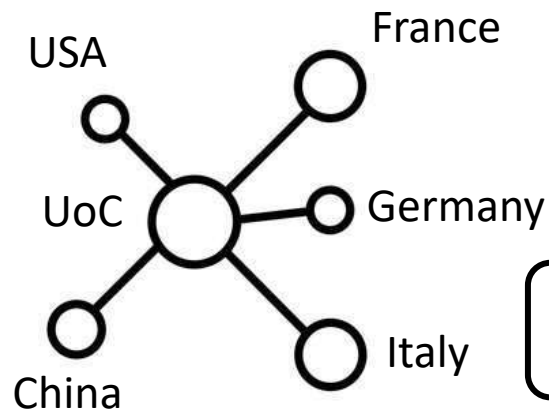
Protection?

Surveillance?

<https://en.unesco.org/artificial-intelligence/ethics/cases>



4) Social Sciences & Humanities



TALOS ERA Chair in AI for SSH



A new Research Centre of excellence in Hybrid AI for SSH

Faculty of Philosophy at UoC Rethymnon

Philology

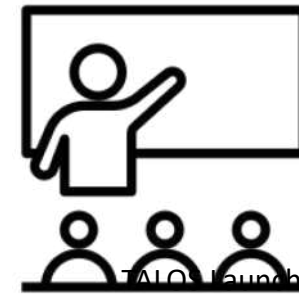
History and
Archaeology

Philosophy and
Social Sciences



Research

Training



4) TALOS: AI for Social Sciences & Humanities



Valia
Aggelaki



Kostas
Petrakis



4 PhDs



4 Post-Docs



Eleni
Tamiolaki



Maria
Papadopoulou



Christophe
Roche

18 people



Artemis
Karnava



Anastasia
Natsina



Stergios
Chatzikyriakidis



Stavroula
Tsinorema



Eleni
Katsarou

4) TALOS: AI for Social Sciences & Humanities



Valia
Aggelaki



Kostas
Petrakis



4 PhDs



4 Post-Docs

RT1: Semantic Annotation of Texts



Eleni
Tamiolaki



Maria
Papadopoulou

Use Hybrid AI to semantically annotate large text collections that cover vast historical time periods, revealing patterns and biases. Semantically annotated texts will be enriched with metadata, i.e. with references to concepts stored in knowledge graphs, including domain ontologies, for the purpose of effective data management. The objective is to produce open data that are shareable, searchable, findable, and linkable to external resources.

᾽ ὅτι δὲ καὶ
μουσικῆς ἀγῶν ἦν
καὶ ἀγωνιούμενοι
ἐφοίτων, ἐν τοῖσδε
αὐ δηλοῖ, ἃ ἐστὶν ἐκ
τοῦ αὐτοῦ
προομίου. τὸν γὰρ
Δηλιακὸν χορὸν
τῶν γυναικῶν
ὕμνησας ἐτελεύτα
τοῦ ἐπαίνου

᾽ ὅτι δὲ καὶ
μουσικῆς ἀγῶν ἦν
καὶ ἀγωνιούμενοι
ἐφοίτων, ἐν τοῖσδε
αὐ δηλοῖ, ἃ ἐστὶν ἐκ
τοῦ αὐτοῦ
προομίου. τὸν γὰρ
Δηλιακὸν χορὸν
τῶν γυναικῶν
ὕμνησας ἐτελεύτα
τοῦ ἐπαίνου

᾽ ὅτι δὲ καὶ
μουσικῆς ἀγῶν ἦν
καὶ ἀγωνιούμενοι
ἐφοίτων, ἐν τοῖσδε
αὐ δηλοῖ, ἃ ἐστὶν ἐκ
τοῦ αὐτοῦ
προομίου. τὸν γὰρ
Δηλιακὸν χορὸν
τῶν γυναικῶν
ὕμνησας ἐτελεύτα
τοῦ ἐπαίνου

᾽ ὅτι δὲ καὶ
μουσικῆς ἀγῶν ἦν
καὶ ἀγωνιούμενοι
ἐφοίτων, ἐν τοῖσδε
αὐ δηλοῖ, ἃ ἐστὶν ἐκ
τοῦ αὐτοῦ
προομίου. τὸν γὰρ
Δηλιακὸν χορὸν
τῶν γυναικῶν
ὕμνησας ἐτελεύτα
τοῦ ἐπαίνου

᾽ ὅτι δὲ καὶ
μουσικῆς ἀγῶν ἦν
καὶ ἀγωνιούμενοι
ἐφοίτων, ἐν τοῖσδε
αὐ δηλοῖ, ἃ ἐστὶν ἐκ
τοῦ αὐτοῦ
προομίου. τὸν γὰρ
Δηλιακὸν χορὸν
τῶν γυναικῶν
ὕμνησας ἐτελεύτα
τοῦ ἐπαίνου

RT5:

HAI

SAI

ML

NLP



RT6:

Standards



4) TALOS: AI for Social Sciences & Humanities



Valia
Aggelaki



Kostas
Petrakis



4 PhDs



4 Post-Docs

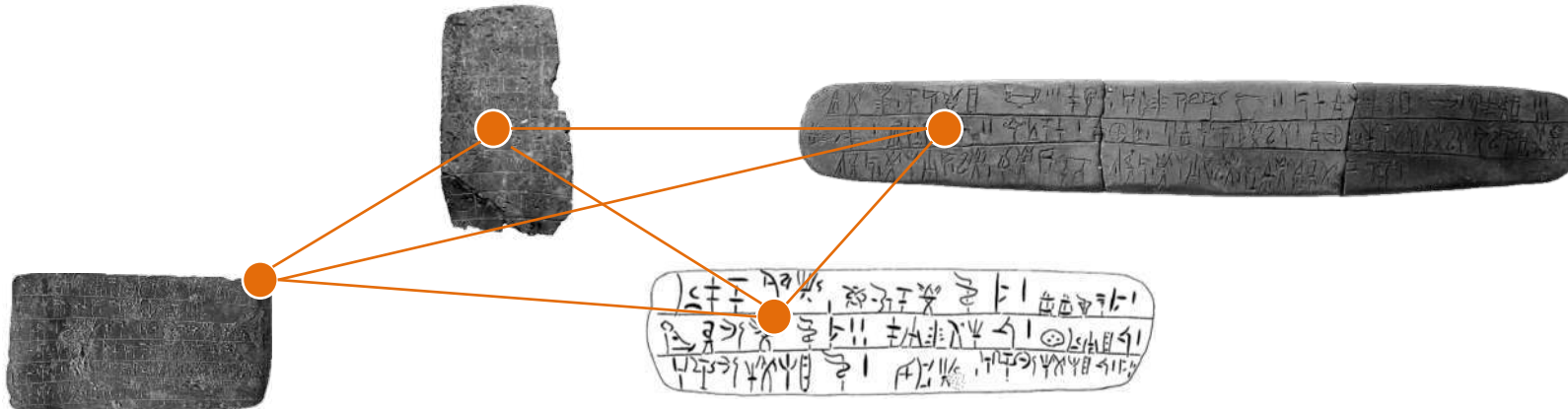
The objective is to preserve and open cultural items in such a way they can be shareable, linkable and findable. Particular attention will be paid to scarce resources such as linear B inscriptions.

RT2: Preservation & Dissemination of Cultural Heritage



Artemis
Karnava

DL will be used to complete inscriptions as well as terminology, ontology and knowledge graphs for their representation.



RT5:

HAI

SAI

ML

NLP



RT6:

Standards



4) TALOS: AI for Social Sciences & Humanities



Valia
Aggelaki



Kostas
Petrakis



4 PhDs



4 Post-Docs

Using NLP, Knowledge Representation (KR) and Deep Neural Networks for pattern detection in order to detect linguistic and semantic patterns in a large corpus. The detection of patterns and correlation with metadata in corpora that cover a long historical period and/or different genres is cardinal for an approach to modern literature as historical evidence as well as for the history of literature, history of genres, and the history of concepts and ideas

RT3: Corpora Analysis



Anastasia
Natsina



Stergios
Chatzikyriakidis



RT5:

HAI

SAI

ML

NLP



RT6:

Standards



4) TALOS: AI for Social Sciences & Humanities



Valia
Aggelaki



Kostas
Petrakis



4 PhDs



4 Post-Docs

“Ontologies are used with great success in education because they allow to formulate the representation of a learning domain by specifying all concepts involved, relations between concepts and all properties and conditions that exist.”

“Ontologies in education – state of the art”, Stancin, K., Posic, P. & Jaksic, D. <https://doi.org/10.1007/s10639-020-10226-z>



Ontologies for:

- ✓ describing learning domains
- ✓ curriculum modelling and management
- ✓ describing learner data
- ✓ describing e-learning services

Applications for Education: Expert Systems

RT4: Digitalisation of Education



Eleni
Katsarou

RT5:

HAI

SAI

ML

NLP



RT6:

Standards



4) TALOS: AI for Social Sciences & Humanities



Valia
Aggelaki



Kostas
Petrakis



4 PhDs



4 Post-Docs

RT1: Semantic Annotation of Texts



Eleni
Tamiolaki



Maria
Papadopoulou

RT2: Preservation & Dissemination of Cultural Heritage



Artemis
Karnava

RT3: Corpora Analysis



Anastasia
Natsina



Stergios
Chatzikyriakidis

RT4: Digitalisation of Education



Eleni
Katsarou

RT5:

HAI

SAI

ML

NLP



RT6:

Standards



4) TALOS: AI for Social Sciences & Humanities



1) Enhancing the knowledge of the next generation of students in Digital and AI

- Opening the University to children and teens
- New Curricula in Digital Humanities

2) Dissemination

- MOOCs (Ethics, AI, DH...)

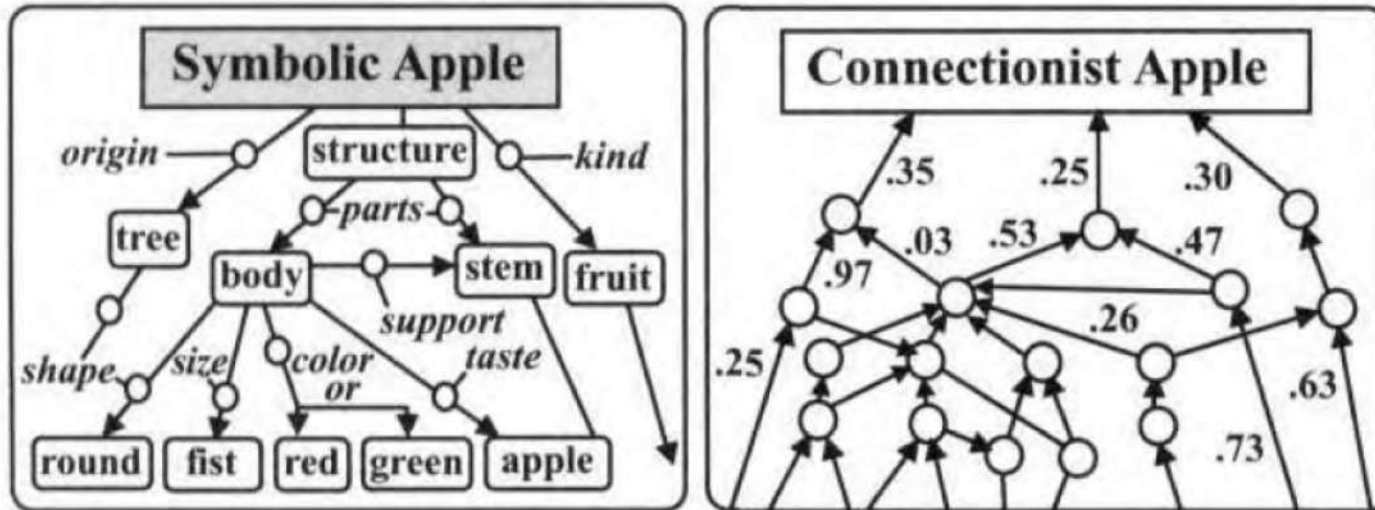
3) International training (on site & online)

TALOS Virtual Academy



- Credits in AI for SSH
- PhD Courses
- Summer Schools

To Conclude: Digital Intelligence



In ChatGPT, **knowledge** is represented through a set of parameters or **weights** that are learned during the model's training process.

These weights represent the **connections** and patterns between different **words** and **phrases** in the text data that ChatGPT was trained on.

Understanding in ChatGPT is represented through the model's internal representations and **mathematical computations**.



New kind of knowledge
New kind of reasoning

Does it matter to Digital Intelligence to be understandable by humans?





IS THE FUTURE OF HUMANITY HUMAN?

